

BOOSTER PUMPS VERTICAL MULTISTAGE MONOBLOCK

The LEO EVP monoblock vertical pumps are designed for semi-professional boostersystems. Impellers in high strength thermoplastic. Suitable for water supply of high-rise buildings, filtration and transfer at waterworks, pressure boosting in main pipe. Washing and cleaning systems, boiler feeding, water circulation, watertreatment systems. Ultra-filtration, reverse-osmosis and distillation systems. Agricultural irrigation, sprinkler systems and fire fighting.

- EVP MULTISTAGE MONOBLOCK**
- Material in SS-AISI/304 - DIN GG-20
 - Power: 0,5 Hp/230V - 10 Hp/400V
 - Maximum volume: 1,2 m³/h - 16 m³/h
 - Maximum height: 12 m - 150 m
 - In and outlet connection: DN-25 (3/4") till DN-38 (1.1/2")
 - Maximum liquid temperature: + 60°C



EVP2 - till EVP10

PUMP	
Stainless steel AISI/304 wetted parts	Impellers in thermoplastic
MOTOR	
IE 3 motor (IE 2 motor optional)	Totally enclosed and fan cooled
Insulation class F	Protection class IP55
Standard voltage 50 Hz, 1 x 220V/3 x 400V	

BOOSTERS STAINLESS STEEL HORIZONTAL MULTISTAGE

This innovative variable speed-pump with PM motor (permanent magnetic), is an energy-saving technology who adjusts performance by automatically reducing the speed to the according water demand, providing constant pressure to all taps. The watercooled motor makes the soundlevel lower than 47 dB(A) in standard use.

- BOOSTERSET**
- Power: 550 W/230V/50-60 Hz
 - Maximum volume: 4,8 m³/h
 - Maximum height: 42 m
 - Maximum speed: 5200 RPM
 - Connections: in- and outlet 1"



MAC 550

The MAC 550 is the newest compact all-in-one solution.



DISCONNECTION SET

It is applicable to household water supply, garden watering, fish farming and poultry raising, industry and mining, high-rise buildings. Most countries don't allow boosting directly on the main watersupply. LEO Europe can offer certified disconnection sets from 10 till 1000 ltr.



VERTICAL MULTISTAGE COUPLED

The LEO LVR (DIN-GG20-AISI/304) and the LEO LVS (SS-AISI/316) with drink-water certification. Pumps are designed for water supply, high-rise buildings, filtration and transfer at waterworks, pressure boosting in main supply. Washing and cleaning systems, boiler feeding, water circulation, water treatment systems. Ultra-filtration, reverse-osmosis and distillation systems. Agricultural, sprinkler irrigation, food and beverage industry, fire fighting systems. Motor with standard B5 flange. Easy to replace the sealcartridge from the outside.

- LVR/LVS MULTISTAGE COUPLED**
- SS-AISI/316 or DIN GG-20 (LVR) • Cartridge seal
 - Power: 0,5 Hp/230V - 150 Hp/400V
 - Maximum volume: 4,2 m³/h - 240 m³/h
 - Maximum height: 12 m - 325 m
 - In and outlet connection: DN-32 till DN-200
 - Maximum liquid temperature: + 120°C



LVR-1 till LVR-200
LVS-3 till LVS-200

PUMP	
Stainless steel AISI/304-316 wetted parts	Impellers in stainless steel
MOTOR	
IE 3 motor (IE 2 motor optional)	Totally enclosed and fan cooled
Insulation class F - Protection class IP55	Standard voltage 50 Hz, 1 x 220V/3 x 400V

SELF PRIMING PUMPS SWIMMING POOL

Self priming swimming pool pumps are used for water-circulation in a small and medium-sized swimming pools. Slightly dirty water with solids in suspension can be perfectly filtered.

- Type XKP250-2 till 456
- In-outlet: 1.1/2" - 40 mm
- Type XKP556 till 2206
- In-outlet: 2" - 50 mm

- SWIMMING POOL PUMPS**
- Power: 250W/230V - 2200W/230V
 - Maximum volume: 7 m³/h - 30 m³/h
 - Maximum height: 6,9 m - 17,8 m



XKP250-2 till XKP456
XKP556 till XKP2206

PUMP	
Plastic pump body	ABS impeller
AISI/304 shaft	
Maximum liquid temperature + 35°C	
Maximum suction + 3,5 m	
MOTOR	
Copper or aluminium winding	Built-in thermal protector for single-phase motor
Insulation class F	
Protection class IPX5	

- SANDFILTER PUMPSET**
- Power: 600W/230V - 2200W/230V
 - Maximum volume: 8 m³/h - 24 m³/h
 - Maximum height: 9,7 m - 17,8 m

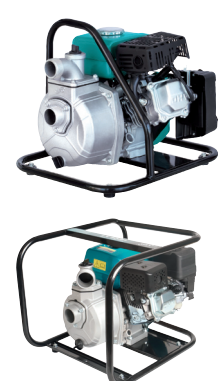


H2Q-QCC310 till H2Q-QCC600

ENGINE PUMPS MEDIUM PRESSURE

To transfer clean water with liquid temperature between 0°C and 40°C. Applicable in water supply and drainage for factories, mines, municipals facilities as well as field irrigation, etc.

- GASOLINE 4 STROKE ENGINE**
- Power LGP 15A till LGP 30A: 1,6 HP till 6,5 HP
 - Maximum volume: 2 m³/h - 60 m³/h
 - Maximum height: 38 m - 32 m
 - Inlet/outlet: 25 mm/ 38 mm/50 mm/80 mm



LGP10A - LGP15A
LGP20A - LGP30A

HIGH PRESSURE

- GASOLINE 4 STROKE ENGINE**
- Power LDP 20H/LGP20-2H: 6,5HP
 - Maximum volume LGP 20H: 30 m³/h
 - Maximum volume LGP 20H-2H: 20 m³/h
 - Maximum height LGP 20H: 58 m
 - Maximum height LGP 20H-2H: 81 m
 - Maximum suction: 5 m/120s
 - Inlet: 50 mm
 - Outlet: 38 mm/1 x 38 mm + 2 x 25 mm
 - Rated speed: 3600 rpm



LGP20H - LGP20-2H

DIESEL

- DIESEL 4 STROKE ENGINE**
- Power LDP 20A/30A: 3,8 Hp - 5,4 Hp
 - Maximum volume LDP 20A/30A: 30 m³/h - 55 m³/h
 - Maximum height LDP 20A/30A: 25 m
 - Maximum suction: 5 m/120s
 - Inlet/outlet LDP 20A: 2 x 2" (50 mm)
 - Inlet/outlet LDP 30A: 2 x 3" (75 mm)
 - Displacement: 219 cc/306 cc
 - Rated speed: 3600 rpm
 - Weight: LDP 20A/30A: 35 kg - 49 kg



LDP20-A - LDP30-A

ACCESSORIES

MEMBRANE TANKS

- Coated or SS-AISI/304 • Membrane: EPDM
- Actual capacity: 18 ltr - 100 ltr
- Maximum temperature: + 99°C
- Max. pressure: 8 bar
- Connection: G1"



19CT - 24CT
50CT - 100CT

ELECTROMAGNETIC SWITCH

- Rated voltage: 220V-240V/110V - 120V - 50/60 Hz
- Max. power: 1.1kW/1,5kW - 10A - IP55
- Starting pressure setting: 1,2/1,5/2,2 bar
- Connection thread: G1"
- Maximum operating temperature: + 60°C



PS/04A

ARP HEATING CIRCULATOR

- Innovative variable speed circulator
- Power: 10/45 W/230V/50 Hz
- Maximum flow: 2,6 m³/h
- Maximum height: 6 m
- Maximum liquid temperature: 110°C
- Conform EEE European standards



ARP25-60/180
ARP32-60/180

WC DOMESTIC LIFTING STATION

- Suitable for sewage and toilet water
- Automatic start and stop, low noise
- Power: 600W, single phase
- New blade for better cutting performance
- Max. flow: 7,5 m³/h • Max. height: 19,2 m
- Maximum liquid temperature: + 50°C



WC601A - WC601B - WC601C



Since 2017, Leo Pumps, one of the world's leading companies in engineering and manufacturing of water pumps, established its European headquarters in the North East of Belgium, with the purpose to have the LEO products available in all European countries offering short delivery times and an optimized customer service before and after sales.

LEO Pumps offers unique design, innovative products including the newest technologies and materials with high performances conform to the European standards. All our pumps are covered by 24 months full warranty.

Leo Europe has the aim to be the number one European supplier for the complete range of water pumps, offering excellent quality products provided with the required European certifications, in a professional trend-setting design and packaging. Our great team with almost 40 years of experience in the water pump market and our in-house service and repair centre, contribute to

the high level assistance we offer to our wide range of customers. In order to ensure an even better service and higher product availability, we have opened a brand new additional European logistics centre with warehouse and offices in central Europe to improve our customer support furthermore in your preferred language. We have also created our SSP (Showroom Standardization Program) to support your sales efforts in the best possible way.

Feel free to ask how LEO can boost your pump-business.



Leo Pumps Europe BV

Leo Baekelandlaan 5209,
3900 Pelt, Belgium.
Tel.: 0032(0)11/64 91 94
www.leopumps-europe.com info@leopumps-europe.com



Warranty of 24 months



Central European product availability



Showroom Standardization Program



European warehouse

Member of the WILG-Group



SELF PRIMING JETPUMPS CAST IRON - MULTISTAGE CAST IRON - STAINLESS STEEL - MULTISTAGE SILENT

The LEO self-priming pumps can be used to transfer clean water or other liquids similar to water. Suitable for lifting water from the well, sprinkling irrigation in garden, pressure boosting of running water, supporting equipment, etc...

Domestic series available as complete booster set with hydrophore tank or pump controller.

PUMP	
Cast iron pump body or SS-AISI/304 pump body	Special anti-rust treatment
Stainless steel impeller	AISI/304 shaft
Maximum liquid temperature +40°C	Maximum suction +9 m
MOTOR	
C&U bearing	Motor with copper winding
Built-in thermal protector	for single-phase motor
Insulation class F	Protection class IPX4

JET PUMP CAST IRON (single-phase)

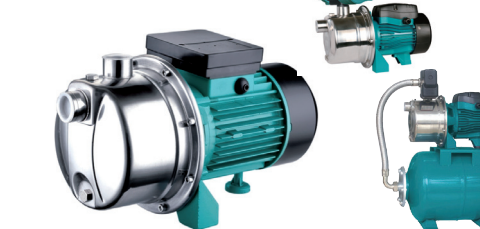
- Jet pump with SS-AISI/304 impeller • Power: 0,4 Hp/230V - 2 Hp/230V
- Power: 1,5 Hp/230V 3 Hp/3 x 230/400V • Maximum volume: 2,1 m³/h - 8,4 m³/h
- Maximum height: 35 m - 65 m • In-/outlet connection: 1" (1.1/4") - 1"



Ajm30 till Ajm90 - Ajm110 till Ajm150

JET PUMP STAINLESS STEEL

- Silent pump with SS-AISI/304 impeller • Power: 0,4 Hp/230V - 1,2 Hp/230V
- Maximum volume: 2,4 m³/h - 3,6 m³/h • Maximum height: 11 m - 48 m
- In- and outlet connection: 1" - 1"



Ajm30S - Ajm45S - Ajm60S - Ajm75S - Ajm90S

MULTISTAGE CAST IRON PUMP

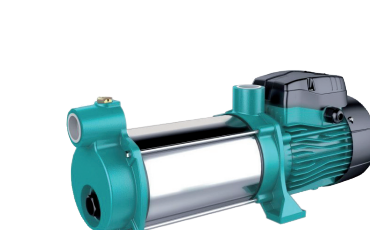
- Silent pump with thermoplastic impellers • Power: 0,75 Hp - 1 Hp/230V
- Maximum volume: 4,2 m³/h - 5,4 m³/h • Maximum height: 35 m - 46,5 m
- In- and outlet connection: 1" - 1"



3ACm60 - 4ACm75

MULTISTAGE STAINLESS STEEL PUMP

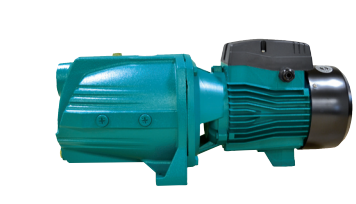
- Silent pump with 3, 4 or 5 thermoplastic impellers
- Power: 0,8 Hp/230V - 1,2 Hp/230V • Maximum volume: 5,4 m³/h - 6 m³/h
- Max. height: 35 m - 55 m • In- and outlet connection: 1" - 1"



3ACsm100S - 4ACsm100S - 5ACsm100S

JET PUMP CAST IRON (three-phase)

- Silent pump with thermoplastic impellers
- Power: 0,75 Hp/230V - 1 Hp/400V
- Maximum volume: 4,2 m³/h - 5,4 m³/h • Maximum height: 35 m till 46,5 m



AJt110 till AJt220

STAINLESS STEEL GARDEN JET PUMP

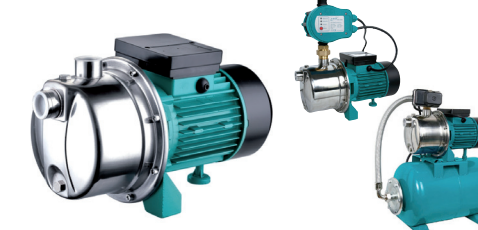
- Garden jet pump with SS-AISI/304 impeller • Power: 1,2 Hp/230V
- Maximum volume: 0,6 m³/h - 3,6 m³/h • Maximum height: 11 m - 43 m
- In- and outlet connection: 1" - 1" • With on/off switch with 1,5 m cable



XKJ904S - LKJ801S

MULTISTAGE STAINLESS STEEL PUMP

- Silent pump with 4 thermoplastic impellers
- Power: 0,8 Hp/230V - 1,2 Hp/230V • Maximum volume: 4,8 m³/h - 5 m³/h
- Maximum height: 34 m - 56,5 m • In- and outlet connection: 1" - 1"



3XCm - 4XCm - 5XCm

MULTISTAGE SILENT PUMP

- Silent pump with body in ABS - SS-AISI/304
- Power: 900W/230V - 1300W/400V • Maximum volume: 5,4 m³/h
- Maximum height: 35 m - 60 m • In- and outlet connection: 1" - 1"



3XCm/129PS - 4XCm/129PS - 5XCm/129PS

CENTRIFUGAL PUMPS STAR-IMPELLER PERIPHERAL- SINGLE IMPELLER - DOUBLE IMPELLER - CAST IRON - SS-AISI/304

Centrifugal pumps for industrial use and urban water supply, pressure boosting for high buildings and fire fighting, garden irrigation, long-distance water transfer, heating ventilation and air controlling, circulation and pressure boosting for cold and hot water and supporting equipment etc.

PUMP		
Cast iron pump body or SS-AISI/304 pump body	Special anti-rust treatment	
AISI/304 shaft	Maximum liquid temperature +40°C	
Maximum suction +8 m	MOTOR	
C&U bearing	Motor with copper winding	
Built-in thermal protector	for single-phase motor	
Insulation class F	Protection class IPX4	
IE 2 motor	(three phase, power ≥ 0,75 kW)	

PERIPHERAL PUMP

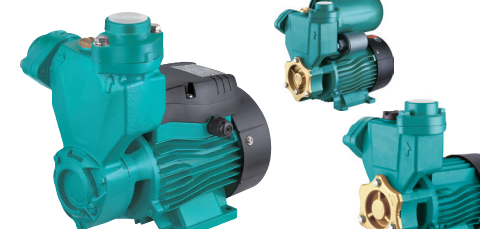
- Power: 0,4 Hp/230V - 1 Hp/230V • Maximum volume: 0,4 m³/h - 3 m³/h
- Maximum height: 5 m - 75 m • Brass star-impeller



APm37 till APm75L

PERIPHERAL PUMP (self priming)

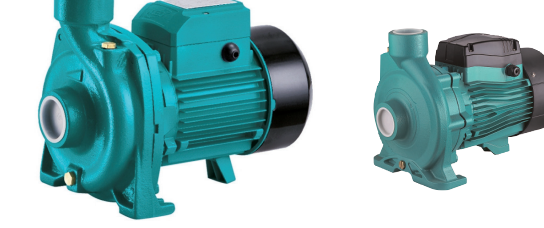
- Power: 0,4 Hp/230V - 1 Hp/230V • Maximum volume: 0,4 m³/h - 3 m³/h
- Maximum height: 5 m - 75 m • Brass star-impeller



APSm 37 till APSm 110

SINGLE IMPELLER (medium flow)

- Power: 0,8 Hp/230V - 10 Hp/400V • Maximum volume: 4,8 m³/h - 9 m³/h
- Maximum height: 17 m - 55 m



ACm25 till AC750C4 - XGm/1A - XGm/1B

SINGLE IMPELLER (high flow)

- Power: 0,8 Hp/230V - 10 Hp/400V • Maximum volume: 24 m³/h - 96 m³/h
- Maximum height: 12,5 m - 22 m



ACmB2 - ACmB3/4 - ACmB4

DOUBLE IMPELLER (high pressure)

- Power: 1,0 Hp/230V - 5,5 Hp/400V • Maximum volume: 4,8 m³/h - 15 m³/h
- Maximum height: 45 m - 82 m



2ACm75 till 2AC400H

OPEN IMPELLER

- Power: 0,5 Hp/230V - 4 Hp/230V/400V
- Maximum volume: 1,2 m³/h - 66 m³/h • Maximum height: 11,6 m - 7,5 m



ABK50 till ABK400

SINGLE IMPELLER

- Power: 0,5 Hp/230V/380V - 2 Hp/230V/400V
- Maximum volume: 4,8 m³/h - 9,6 m³/h • Maximum height: 20,9 m - 30,2 m



AMS120/1.1 till AMS210/1.5

OPEN IMPELLER

- Power: 1,5 Hp/230V - 2 Hp/230V
- Maximum volume XHSm 1500: 16,2 m³/h - XHSm 2000: 19,8 m³/h
- Maximum height: XHSm 1500: 15 m - XHSm 2000: 20,5 m
- In- and outlet connection: 2" - 2"



XHSm 1500 - XHSm 2000

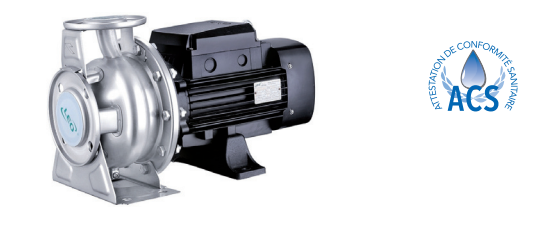
NORMALIZED PUMPS CENTRIFUGAL SS-AISI/304- CENTRIFUGAL CAST IRON

Normalized centrifugal pumps are mainly used for circulation, cooling systems, irrigation and transfer of clean, chemically light-aggressive water and other liquids.

PUMP		
Available in cast iron or SS-AISI/304	Impeller AISI/304 - HT200	
AISI/304 shaft	Maximum liquid temperature +85°C	
Maximum operating pressure 12 bar	DN connections - EN 733 (DIN 24255)	
Sic/Sic mechanical seal (DIN 24960)	MOTOR	
Copper or aluminium winding	Built-in overload motor protector	
Insulation class F	Protection class IP54	
Performance in compliance CEI 2-3 (IEC 34.1)		

CENTRIFUGAL SS-AISI/304

- Power: 1,5 Hp/230V - 30 Hp/400V • Maximum volume: 6 m³/h - 132 m³/h
- Maximum height: 21,5 m - 40 m • Monoblock up to 7,5 kW
- Close coupled from 9,2 up to 22 kW (flanged BS motor, optional Ex)



XZS 50 - XZS65 - XZS80 - XZS100

CENTRIFUGAL CAST IRON

- Power: 1,0 Hp/230V - 75 Hp/400V • Maximum volume: 18 m³/h - 210 m³/h
- Maximum height: 17,5 m - 95 m • Monoblock up to 7,5 kW
- Close coupled from 9,2 kW up to 55 kW (flanged BS motor, optional Ex)



XST 32 - XST 40 - XST50 - XST 65 - XST80

SUBMERSIBLES PUMPS DRAINAGE, SEWAGE AND DEWATERING

Can be used to transfer clean or slightly dirty water or other liquids similar to water. Suitable to be immersed in water for lifting water from a cellar or a pool, and draining water from the basement.

PUMP	
High engineered plastic/SS 304 body	Upper and side-outlet
Float switch ensures automatic cut-in and cut-out	Maximum liquid temperature +35°C
Maximum immersion depth 7 - 12 m	Maximum diameter of particle 1 - 15/35 mm
MOTOR	
Motor with aluminium winding	Built-in thermal protector
Insulation class F	Protection class IPX68

PLASTIC DRAINAGE AND SEWAGE PUMPS

- Power: 250W/230V - 1000W/230V
- Maximum volume: 0,9 m³/h - 12,6 m³/h
- Maximum height: 5,8 m - 11,6 m



XKS/410PW - AKS/750PSW

SS/304 DRAINAGE AND SEWAGE PUMPS

- Power: 550W/230V - 1000W/230V
- Maximum volume: 0,9 m³/h - 19,5 m³/h
- Maximum height: 5,8 m - 10,5 m



LKS/758PSW

Can be used to transfer heavy dirty water, sewage or other liquids similar to water. Suitable to be immersed in water for lifting gray water, waste water, sewage water and heavy polluted drainage water from construction sites.

PUMP		
Pump body HT200	Upper and side-outlet	
Float switch ensures automatic cut-in and cut-out	Maximum liquid temperature +40°C	
Maximum diameter of particle 8,5 - 19,5 mm	MOTOR	
Motor with copper winding	Built-in thermal protector	
Insulation class F	Protection class IPX68	

SEWAGE CUTTER PUMPS

- Power: 750W/230V
- Maximum volume: 15 m³/h
- Maximum height: 13 m



LSWm100CA

DEWATERINGS PUMPS

- Power: 2,2 kW/400V - 11 kW/400V
- Maximum volume: 27 m³/h - 147 m³/h
- Maximum height: 32 m - 48,5 m



KBZ 22.2 till KBZ 45.5 KBZ 47.5 till KBZ 611

RESERVOIR PUMPS HIGH PRESSURE SUBMERSIBLE PUMPS

Can be used for water supply from wells or reservoirs. Most suitable for domestic use, for rainwater harvesting applications in garden use and irrigation. Compact easy to use submersible pump with dry-running protection and built-in check valve. Motor with thermal protector. The SE1 types give the possibility for connecting a floating suctionhose, especially for rainwater applications.

MOTOR AND PUMP	
Rewindable motor	Single-phase 230V - 240V/50Hz
Pumps are designed according to the latest European EEl norms	Curve tolerance according to ISO 9906
Insulation class F	Protection class IP68

HIGH-PRESSURE AUTOMATIC

- Power: 900 W/230V - 1100W/230V
- Maximum volume: 0,9 m³/h - 6 m³/h
- Maximum height: 35 m - 45 m
- Built-in pumpswitch
- Standard with 15 mtr. cable (H07RNF)



LKS 902/1102-SE (with strainer) LKS 902/1102-SE1 (1" side-inlet)

Can be used for water supply from wells or reservoirs. Most suitable for domestic use, for rainwater harvesting applications in garden use and irrigation.

MOTOR AND PUMP	
Rewindable motor screen motor	Single-phase 230V - 240V/50Hz
Pumps are designed according to the latest European EEl norms	Curve tolerance according to ISO 9906
Insulation class: F	Protection class: IP68

HIGH-PRESSURE RESERVOIR

- Power SDW2: 0,75 Hp - 1,5 Hp
- Power SDW4: 1,2 Hp - 2 Hp
- Power SDW8: 1,5 Hp - 2 Hp
- SDW2 max. flow: 4,5 m³/h max height 87,5 m
- SDW4 max. flow: 8 m³/h max height 88 m
- SDW8 max. flow: 11 m³/h max height 46 m



5DW2 - 5DW4 - 5DW8 - LKS 900S

BOREHOLES PUMPS BOREHOLE PUMPS - SOLAR BOREHOLE

Can be used for water supply from wells or reservoirs. Can be used for domestic use, for civil and industrial applications, for garden use and irrigation. Pumps are standard supplied with 30 m H07RNF underwater cable and controlbox with built-in protection and capacitor.

MOTOR AND PUMP	
Motor and pump in SS-AISI/304 - Brass	Impellers in thermoplastic
Sand resistant up to 250 gr/m ³	Single-phase 230V - 240V/50Hz
Three-phase 380V - 415V/50Hz	Pumps are designed according to the latest European EEl norms
Curve tolerance according to ISO 9906	

BOREHOLE 2,5" - 3" - 4"

- Power: 0,33 Hp/230V - 2 Hp/230V
- Maximum volume 2,5": 0,3 m³/h - 2,4 m³/h
- Maximum volume 3": 0,3 m³/h - 3,6 m³/h
- Maximum volume 4": 0,6 m³/h - 14 m³/h
- Maximum height: 32 m - 148 m
- Cable standard 30 m - H07RNF



2,5 XRm - 3 XRm - 4 XRm

Think green is the future, but also where there is no electric powersupply available, LEO hybrids the perfect solution. The LEO 4LPS Hybrid AC/DC solar submersible pumps are fitted with a permanent magnet brushless motor. This enables the efficient use of energy. The integrated control system (MPPT and DSP) is built inside the motor.

- Dry-running protection
- Over-current protection
- Over-voltage protection
- Overload protection
- Phase-loss protection

MOTOR AND PUMP	
Built in full SS-AISI/304	AC-voltage range 60 V - 300 VAC/50-60Hz
DC-voltage range 60 V - 400 VDC/50-60Hz	Pumps are designed according to the latest European EEl norms
Curve tolerance according to ISO 9906	

SOLAR 4"

- Power: 0,5 Hp - 2 Hp - AC/DC
- Power supply: 60 - 400V/50 - 60 Hz
- Maximum volume: 0,6 m³/h - 22 m³/h
- Maximum height: 10 m - 150 m
- Built-in intelligent controller
- MPPT & DSP technology
- Optional CN300 Hybrid controller



4LPS HYBRID - CN300